

Direct Bond Wall Lining System (EasyFinish™ System)

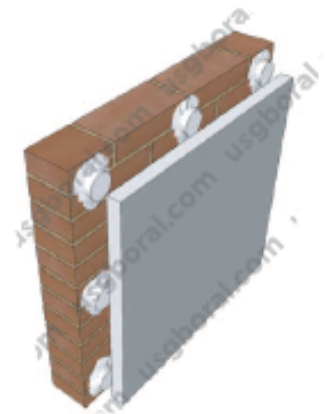
Dry Masonry Lining - Bond (DM-1a) & Solid (DM-1b)



Description

Masonry : Brickwall or Lightweight concrete 100mm ~ 150mm

Board : 1 layer of Jayaboard Sheetrock or as specified

Cavity : up to 40mm



MASONRY TYPE	MAXIMUM HEIGHT (mm)	Grade BS 5234	 FIRE RATING (minutes)	 ACOUSTIC RATING (STC)
100mm Brickwall (Density 1600 Kg/m ³)	3600	Medium Duty	X + 15 (Sheetrock 12mm)	± 43
			X + 30 (Firestop 13mm)	± 44
100mm ALC (Density 576 Kg/m ³)	3600	Medium Duty	X + 15 (Sheetrock 12mm)	± 35
			X + 30 (Firestop 13mm)	± 36